



CEBU PELIS INSTITUTE

CHAPTER 01

Information

CHAPTER 01

Information & Facility

[HOTEL RESORT + ESL]



CONVENIENCE

Just 5 minutes from downtown and nearby shopping centers



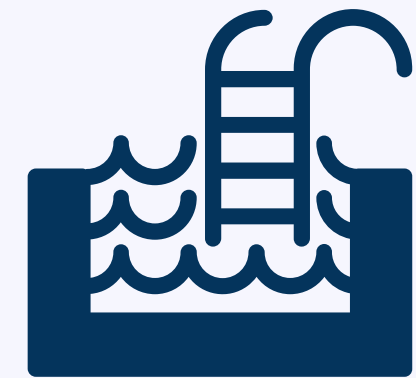
BEAUTY

A beautiful campus in harmony with the ocean, mountains, and city views



COMFORT

Hotel-style service with high-class facilities




AMENITY

A wide range of facilities available on campus

CHAPTER 01

Information & Facility

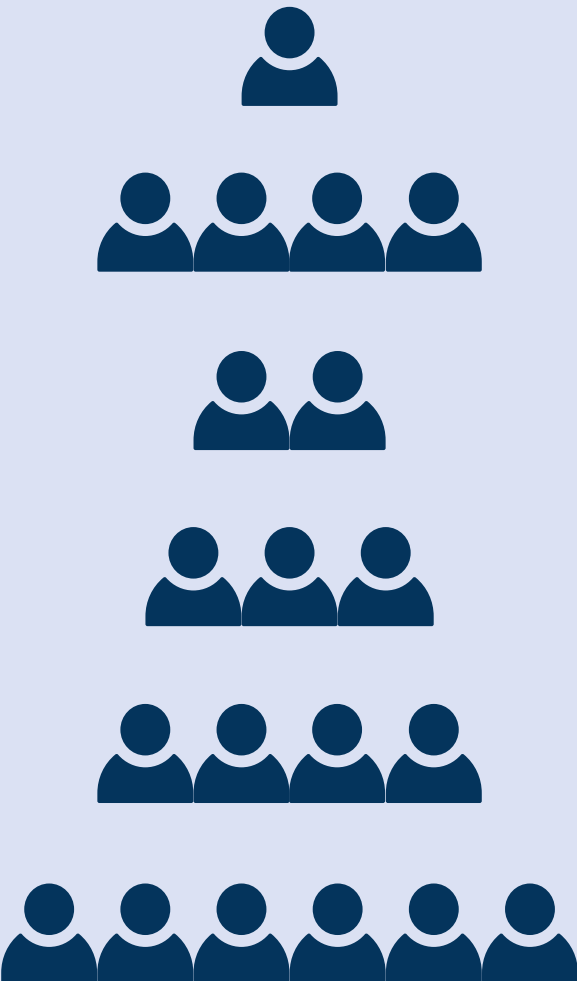
Room Type A / 66



Room Type A occupancy options:

- DELUXE SINGLE / 4
- DELUXE DOUBLE / 30
- DELUXE TRIPLE / 26
- DELUXE QUAD / 6

Room Type B / 16



Room Type B occupancy options:

- SUPERIOR SINGLE / 2
- SUPERIOR DOUBLE A / 2
- SUPERIOR DOUBLE B / 2
- SUPERIOR TRIPLE / 6
- SUPERIOR QUAD / 3
- SUPERIOR HEXA / 2

CHAPTER 01

Information & Facility

Room Type A / 66 Rooms



DELUXE SINGLE / 4

DELUXE DOUBLE / 30

DELUXE TRIPLE / 26

DELUXE QUAD / 6



CHAPTER 01

Information & Facility

Room Type A / Deluxe Single (29.6m²)



1 Queen Bed | Coffee Pot & Cup Set | Coffee Table & Sofa | Night Lamp | Basic Room Amenities

CHAPTER 01

Information & Facility

Room Type A / Deluxe Double (29.6m²)



2 Single Beds | Desk, Chairs & Nightstand | Wooden Blinds | LED Lights
Instant Water Heater | Refrigerator & Split-Type Air Conditioner | Laundry Basket & Hangers

CHAPTER 01

Information & Facility

Room Type A / Deluxe Triple (29.6m²)

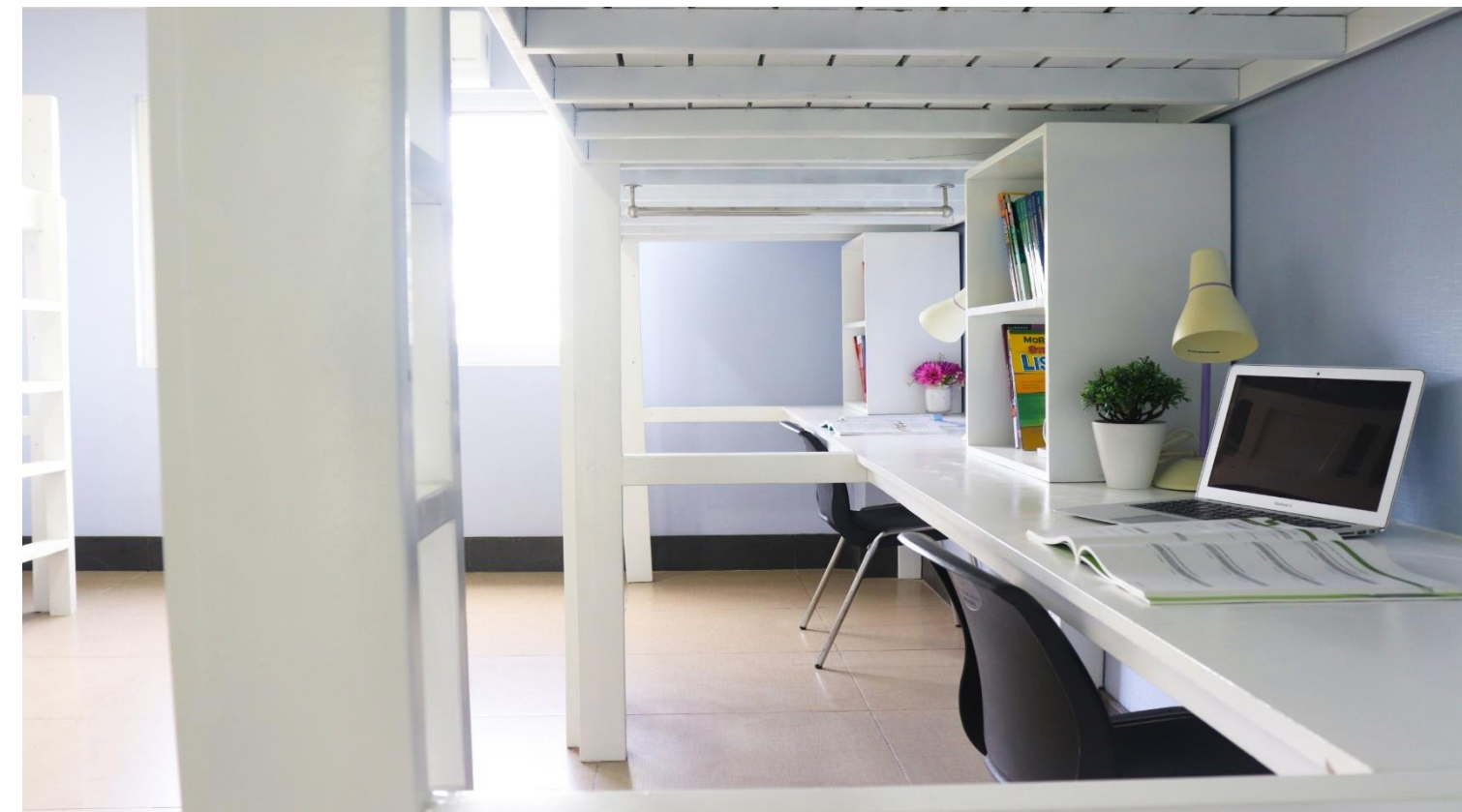


3 Single Beds | Desk, Chairs & Nightstand | Wooden Blinds | LED Lights
Instant Water Heater | Refrigerator & Split-Type Air Conditioner | Laundry Basket & Hangers

CHAPTER 01

Information & Facility

Room Type A / Deluxe Quad (31.6m²)



4 Single Beds with Desk | Wooden Blinds | Instant Water Heater
Refrigerator & Split-Type Air Conditioner | Laundry Basket & Hangers

CHAPTER 01

Information & Facility

Room Type B / 18 Rooms



SUPERIOR SINGLE / 2
SUPERIOR TRIPLE / 6

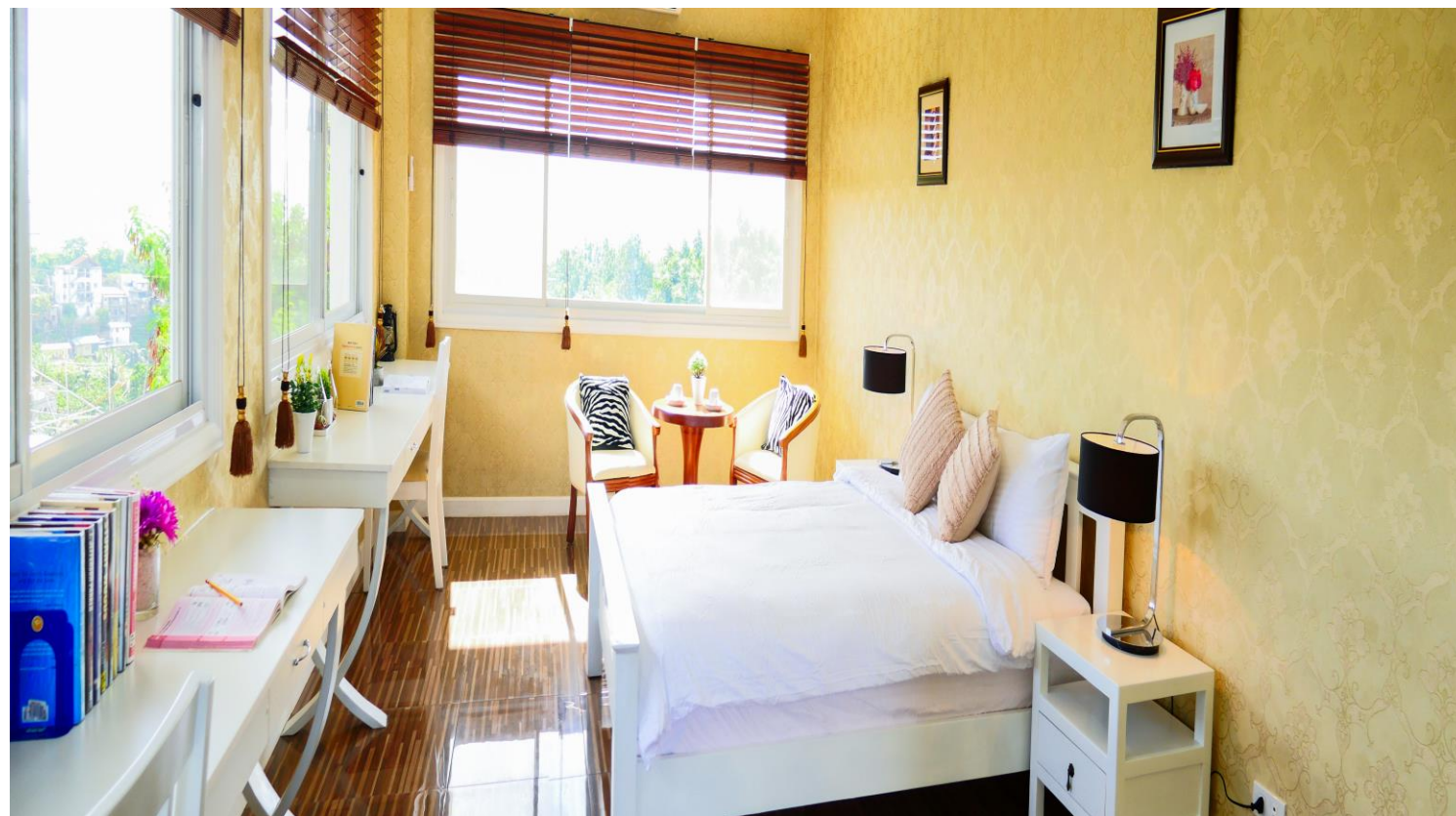
SUPERIOR DOUBLE A / 2
SUPERIOR QUAD / 3

SUPERIOR DOUBLE B / 2
SUPERIOR HEXA / 2

CHAPTER 01

Information & Facility

Room Type B / Superior Single (34.2m²)

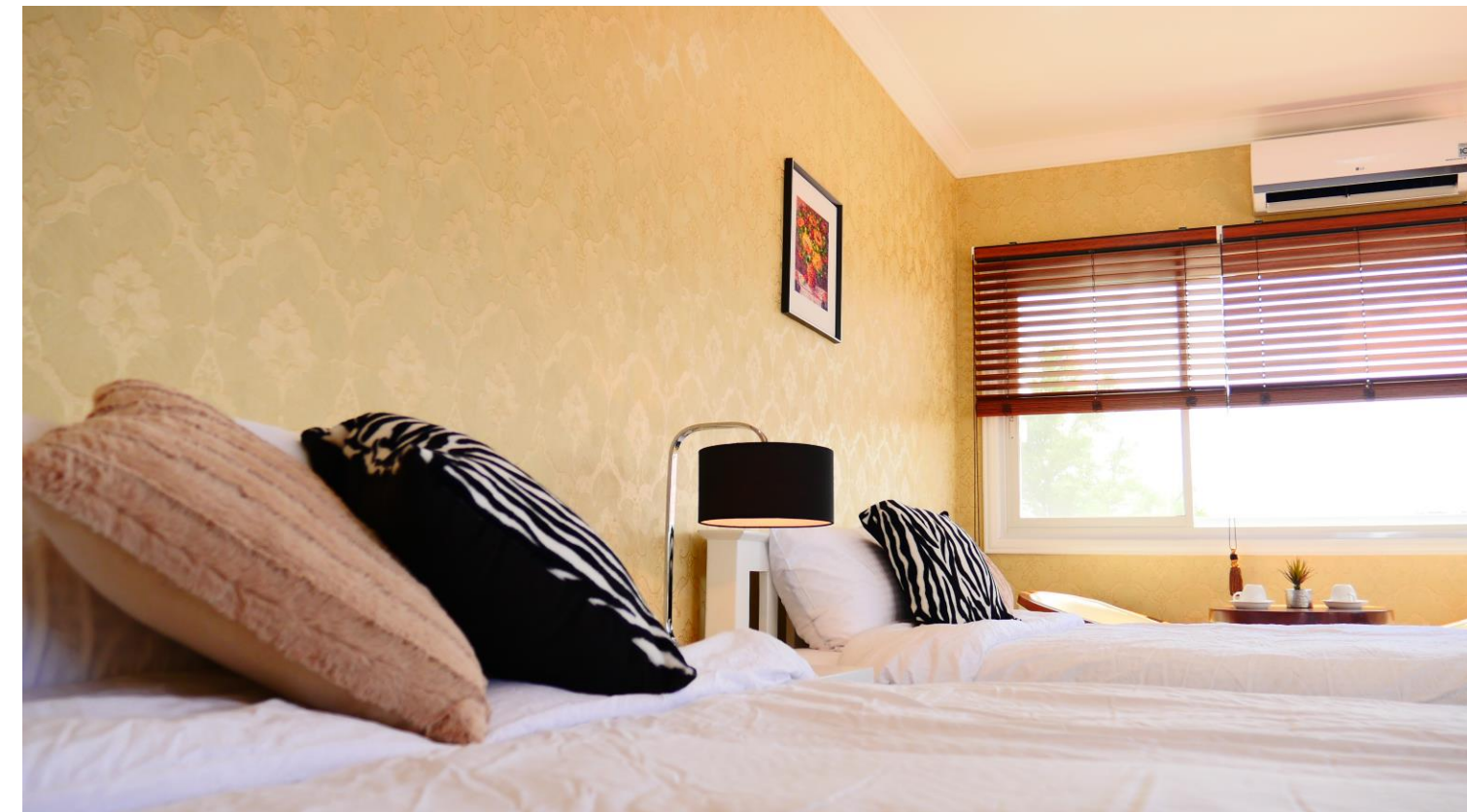


1 Queen Bed | Split-Type Air Conditioner | Bedside Lamp | Coffee Table Set
Coffee Pot & Cup Set | 2 Nightstands | Side Windows | Desk Lamp | Basic Room Amenities

CHAPTER 01

Information & Facility

Room Type B / Superior Double A (34.2m²)



2 Queen Beds | Split-Type Air Conditioner | Bedside Lamp | Coffee Table Set
Coffee Pot & Cup Set | 2 Nightstands | Side Windows | Desk Lamp | Basic Room Amenities

CHAPTER 01

Information & Facility

Room Type B / Superior Double B (34.2m²)



2 Single Beds | Split-Type Air Conditioner | Coffee Table Set
Coffee Pot & Cup Set | Desk Lamp | Basic Room Amenities

CHAPTER 01

Information & Facility

Room Type B / Superior Triple (34.2m²)

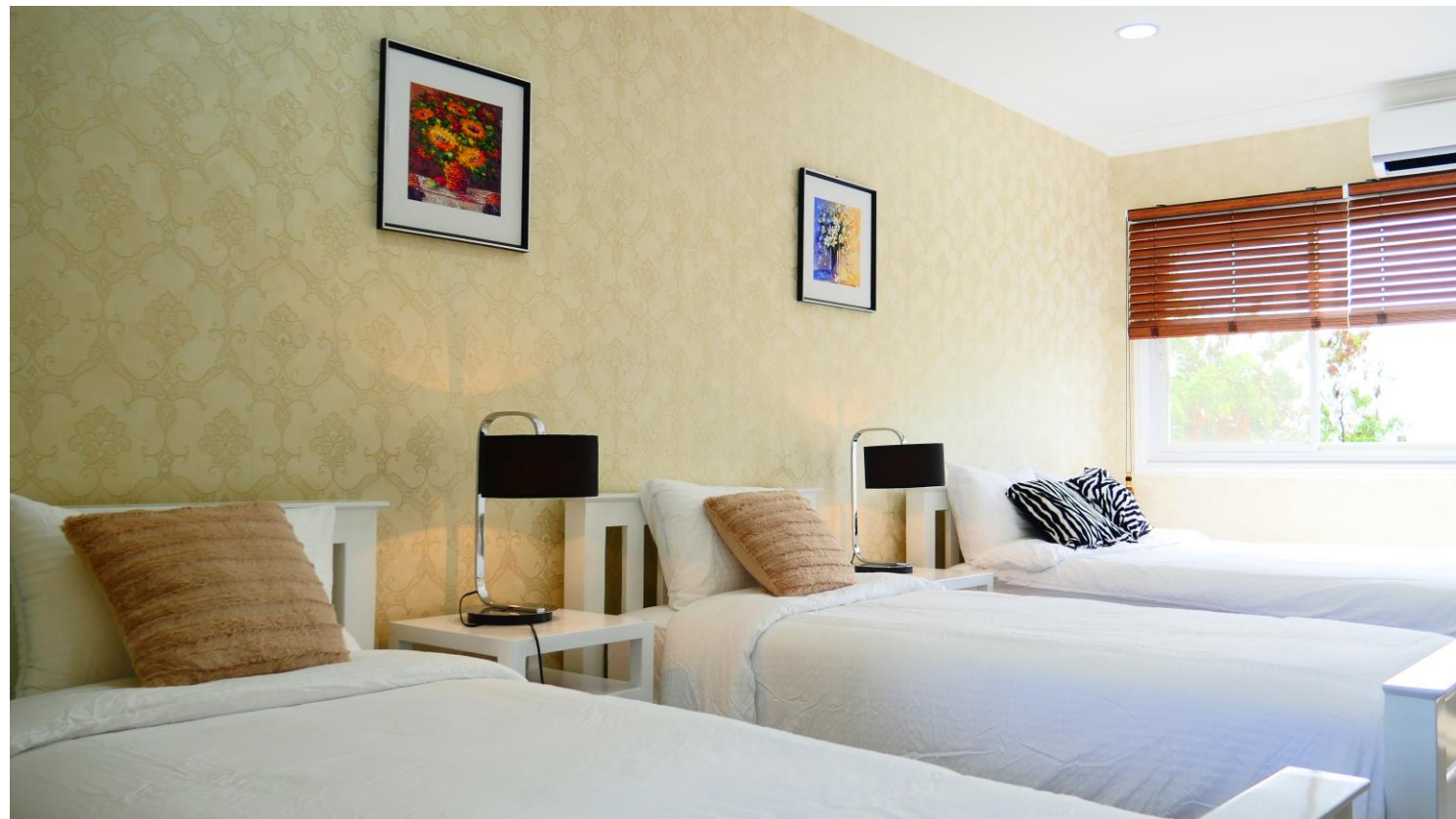


3 Single Beds | Split-Type Air Conditioner | Bedside Lamp | Desk Lamp
Coffee Pot & Cup Set | 2 Nightstands | Basic Room Amenities

CHAPTER 01

Information & Facility

Room Type B / Superior Quad, Family Room (34.2m²)



1 Queen + 2 Single Beds | Split-Type Air Conditioner | Bedside Lamp | Desk Lamp
Coffee Pot & Cup Set | 2 Nightstands | Basic Room Amenities

CHAPTER 01

Information & Facility

Room Type B / Superior Hexa, Female Room (43m²)



6 Single Beds | Individual Wardrobes | Bedside Lamps | Desk Lamps
Wall-mounted Air Conditioner | Makeup table with mirror | Basic Room Amenities

CHAPTER 01

Information & Facility

Classroom / 154



1:1 CLASSROOM / 4

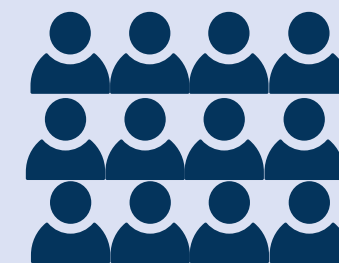


1:4 CLASSROOM / 30



1:8 CLASSROOM / 26

Special Room / 6



CONFERENCE ROOM / 1



FUNCTION ROOM / 4



TOEFL IBT ROOM / 1

CHAPTER 01

Information & Facility

One-on-One Classrooms



School Building



1 : 1 Classroom (3.3m²) / 130

CHAPTER 01

Information & Facility

Group Classrooms



1 : 4 Classroom (14.4m²) / 20



1 : 8 Classroom (19.2m²) / 4

CHAPTER 01

Information & Facility

Special Rooms



Conference Room (128m²) / 1



Function Room (48m²) / 4

CHAPTER 01

Information & Facility

Dining Area (34.2m²)



A 250-Seat Dining Room | Fully Air-Conditioned Buffet | Served for Breakfast, Lunch and Dinner

CHAPTER 01

Information & Facility

Café (55m²)



A Cozy Café with Fully Landscaped Surroundings

CHAPTER 01

Information & Facility

Swimming Pool (840m²)



Olympic-size swimming pool (840 sq. m) | Suitable for Children, Adults and Scuba Diving

CHAPTER 01

Information & Facility

Gym (154m²)



Fully Equipped with Treadmills, Weight Machines, Dumbbells, Yoga Mats, and Table Tennis Facilities

Information & Facility

Other Facilities & Services



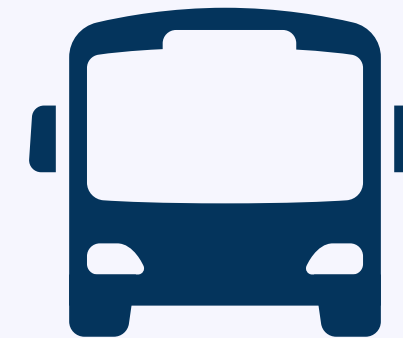
B U F F E T

Daily Breakfast, Lunch
& Dinner Buffet



H O T E L S E R V I C E

Housekeeping and
Laundry Services



D R O P - O F F S E R V I C E

Shuttle Service to
Ayala Mall (Mon – Sun)

An Unparalleled Level of Service

CHAPTER 02

Curriculum

CHAPTER 02

Curriculum

Specialized & Focused Curriculum

ESL COURSE

DIET ENGLISH

GENERAL ENGLISH

INTENSIVE ENGLISH

RAPID PROGRESS 30 / 60

ACADEMIC COURSE

TOEIC | TOEFL
(PREPARATORY / GENERAL /
INTENSIVE)

IELTS
(PREPARATORY / GENERAL /
INTENSIVE / GUARANTEED)

JUNIOR PROGRAM

FAMILY CAMP

JUNIOR CAMP

BUSINESS PROGRAM

E. S. P



CHAPTER 02

Curriculum

ESL Course

Diet English



One-on-One : 2 Classes
1 Student per Class



1:4 Small Group : 1 Class
3-5 Students per Class



1:8 Big Group : 1 Class
5-9 Students per Class

General / Intensive English



One-on-One : 4 / 5 Classes
1 Student per Class



1:4 Small Group : 2 Classes
3-5 Students per Class



1:8 Big Group : 1 Class
5-9 Students per Class

CHAPTER 02

Curriculum

ESL Course

Rapid Progress 30



One-on-One : 6 Classes
1 Student per Class



1:4 Small Group : 3 Classes
3-5 Students per Class

Rapid Progress 60



One-on-One : 6 Classes
1 Student per Class



1:4 Small Group : 3 Classes
3-5 Students per Class

CHAPTER 02

Curriculum

Academic Course

[TOEIC / TOEFL / IELTS] Preparatory



One-on-One : 4 Classes

1 Student per Class
(2 Academic / 2 ESL)



1:4 Small Group : 2 Classes

3-5 Students per Class
(2 ESL)



1:8 Big Group : 1 Class

5-9 Students per Class

[TOEIC / TOEFL / IELTS] General / Intensive



One-on-One : 4/5 Classes

1 Student per Class
(All Academic)



1:4 Small Group : 2 Classes

3-5 Students per Class
(1 Academic / 1 ESL)



Practice Test : 2 Classes

Conducted in group setting

PRACTICE TEST SAMPLE SCHEDULE (90 min)

Mon	Tue	Wed	Thu	Fri
Reading Practice Test	Reading Lecture	Listening Practice Test / Lecture	Writing 1 & 2 Practice Test / Lecture	Speaking Practice Test

CHAPTER 02

Curriculum

Additional Support for Academic Courses

Course Type	Duration	Applicable Tests	Exclusive Benefits
General / Intensive Course	8 – 11 Weeks	TOEIC, TOEFL, IELTS	<ul style="list-style-type: none">- ₱ 1,000 cash support- Sending service to the test center
	12 Weeks or More		<ul style="list-style-type: none">- ₱ 2,000 cash support- Sending service to the test center
Guaranteed Course	12 Weeks	IELTS only	<ul style="list-style-type: none">- Free Official IELTS Test (one time only)- Sending service to the test center- Free tuition extension until target score achieved (excluding dormitory & local fees)



CHAPTER 02

Curriculum

Junior Course

Mandatory + Special Class



One-on-One : 5 Classes
1 Student per Class



1:4 Small Group : 2 Classes
3-5 Students per Class



1:8 Big Group : 1 Class
5-9 Students per Class

Special Lesson : 3 Classes

Special Program : 2 Classes

Special Class

S. Lesson : Optional Classes

Swimming : Mon & Wed, Tue & Thu / Limit: 10 students / 500 PHP

Ukulele : Mon & Wed, Tue & Thu / Limit: 10 students / 500 PHP

Study Guide 1 : Mon-Thu @Conference Room

S. Program : Regular Classes

Study Guide 2 : Mon-Thu (18:30 - 19:15)

Club Activities (Arts & Crafts / Cooking) : Tue-Thu (19:20 – 20:05)

CHAPTER 02

Curriculum

ESP Course

Bridge Course



One-on-One : 4 Classes
1 Student per Class



1:4 Small Group : 2 Classes
3-5 Students per Class



1:8 Big Group : 1 Class
5-9 Students per Class

General Course



One-on-One : 4 Classes
1 Student per Class



1:2 Pair : 1 Class
2 Students per Class



1:4 Small Group : 2 Classes
3-5 Students per Class



1:8 Big Group : 1 Class
5-9 Students per Class

CHAPTER 02

Curriculum

Sample Daily Schedule (ESL Intensive Course)

06:50 – 07:30	SPECIAL STUDY : CNN CLASS	13:15 – 14:00	1:1 Class 3
07:30 – 08:10	Breakfast	14:05 – 14:50	1:1 Class 4
08:10 – 08:55	1:1 Class 1	14:55 – 15:40	Special Study: Self Study
09:00 – 09:45	1:1 Class 2	15:45 – 16:30	1:4 Class2
09:50 – 10:35	Special Study: Self Study	16:35 – 17:20	1:1 Class 5
10:40 – 11:25	1:4 Class 1	17:25 – 18:10	Special Study: Pronunciation
11:30 – 12:15	1:8 class	18:10 – 19:00	Dinner
12:15 – 13:00	Lunch	19:25 – 22:00	Zumba / Special Activity / SSP

CHAPTER 03

Special Program

CHAPTER 03

Special Program



SPECIAL STUDY

Upgrade Your English



SPECIAL ACTIVITY

Learn Through Fun Activities



SPECIAL CLUB

Explore the World

CHAPTER 03

Special Program

Special Study 1



CNN Class

- # CNN Listening Training
- # Essential Vocabulary

- # Every Monday to Friday
- # TIME : 06:50 – 07:30

Recommended for students who want to improve their listening and vocabulary through focused drills.

CHAPTER 03

Special Program

Special Study 2



Pronunciation Class

Learn How to Pronounce with a Proper Accent

Every Monday to Thursday

TIME : 17:25 – 18:10

Recommended for students who want to have perfect pronunciation

CHAPTER 03

Special Program

Special Study 3



Special Speaking Program

- # Interview
- # Free Talk with Topics

- # Every Tuesday to Thursday
- # TIME : 19:20 – 22:35

Recommended for students who want to improve their speaking skills.

CHAPTER 03

Special Program

Special Study 4



Pop English

Learn English through Songs and Movies

Every Tuesday to Thursday

TIME : 19:00 – 19:45

Recommended for students who want to improve their listening and comprehension through pop culture.

CHAPTER 03

Special Program

Special Study 5



Self Study

Focused Self Study Time

TIME : 08:00 – 23:00

Recommended for students who want to use their own time to improve.

CHAPTER 03

Special Program

Special Activity 1



Health & Fitness Program

Fitness Training in English

Every Monday to Friday

TIME : 13:45 – 21:35

**Learn how to work out with our personal trainer
in English!**

CHAPTER 03

Special Program

Special Activity 2



Yoga Class

Stretch, Breathe and Learn English

Every Tuesday & Thursday

TIME : 19:00 – 19:45

Improve your physical and mental well-being through our English yoga class.

CHAPTER 03

Special Program

Special Activity 3



Zumba

Boost Your English with Zumba Moves

Every Monday

TIME : 19:25 – 20:20

**Want to be fit and fab without hitting the gym?
Dance your fat away in this hour-long fitness
routine that improves mind and body
coordination**

CHAPTER 03

Special Program

Special Activity 4



Ukulele

Play Ukulele in English

Every Tuesday & Thursday

TIME : 18:30 – 19:15

Learn to play the ukulele while practicing English in a fun and musical way!

CHAPTER 03

Special Program

Special Activity 5



Festival

Special Event Day

EVERY QUARTER

Come one, come all! Celebrate with us on special occasions and enjoy a sumptuous buffet, uplifting music, and exciting student performances in dancing, singing, theater, and cooking!

THANK YOU  U