



WIDEST ASIAN LEARNER  
ENGLISH SCHOOL

# WALE'S

English Ver 1.02



# WALE'S

[www.walesph.com](http://www.walesph.com)



# BAGUIO



## About

The average annual temperature in Baguio is 19.2 Celsius since the city is located above sea level. You can also experience an autumn-like climate which is conducive growth for moss, orchids, and pine trees. This is the place where air-condition is not necessary. Without the heat, students can concentrate more on their studies without soaking in sweat.

In addition, the city is named a creative city by UNESCO due to its breathtaking mountain views and home to several handwoven crafts from indigenous group and people embrace everyone with hospitality and warm smiles.

## Safe City

The city government ensures a 24-hour police alert which makes the crime rate very low.

We have disciplined law enforcers progressive safety programs and joint effort between the police and the community.

Moreover, police stations are strategically placed around tourist destinations and the central business district and have a monitoring network for foreigners.

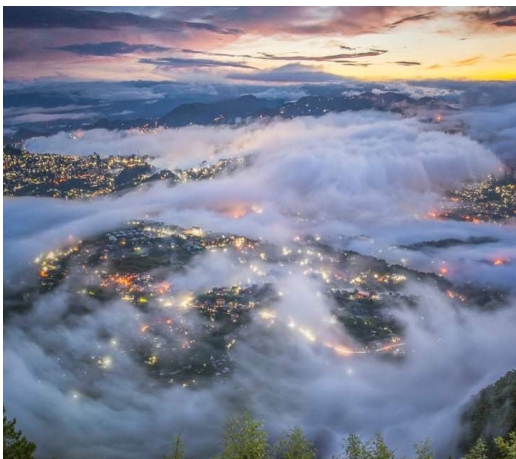
## Education City

Baguio has the best universities that belong to top universities in the Philippines which offer high quality education in all major disciplines. Also, it is one of the fun learning educational hub which equated learning with fun and dynamic interaction.

English is the standard medium of instruction and teachers are proficient and well-trained in the language.









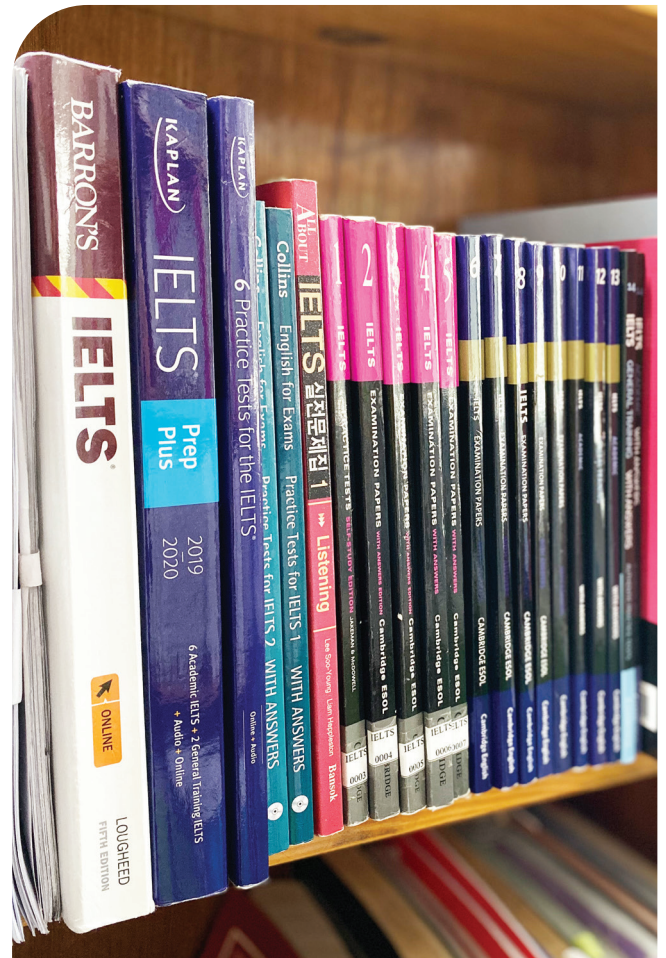
# PROGRAM

## WALES LEVELING SYSTEM

| CEFR     | A0                     | A1         | A2     | B1                       | B2          |             | C1                     | C2      |          |
|----------|------------------------|------------|--------|--------------------------|-------------|-------------|------------------------|---------|----------|
| WALES    | Beginner 1             | Beginner 2 | Elem 1 | Elem 2                   | Pre-Inter 1 | Pre-Inter 2 | Inter 1                | Inter 2 | Advanced |
| Academic | ESL ACHIEVERS          |            |        | ESL ACHIEVERS            |             |             |                        |         |          |
|          |                        |            |        | Business English         |             |             |                        |         |          |
|          | Academic IELTS         |            |        |                          |             |             |                        |         |          |
|          | IELTS General Training |            |        |                          |             |             |                        |         |          |
| GENERAL  | EEP 1                  |            |        |                          |             |             |                        |         |          |
|          | EEP 2                  |            |        |                          |             |             |                        |         |          |
| JUNIOR   | Junior ESL Fundamental |            |        | Junior ESL Developmental |             |             | Junior ESL Intensive   |         |          |
|          |                        |            |        | Junior IELTS Developing  |             |             | Junior IELTS Intensive |         |          |

## DAILY SCHEDULE

| Time          | Subjects          | Note  |
|---------------|-------------------|---|
| 07:00 - 07:45 | Breakfast         | Brakfast Time<br>07:00 - 07:45<br>08:00 - 08:45 |
| 08:00 - 08:45 | Breakfast / Class | 1:1 or Group class                              |
| 08:55 - 09:40 | Class             | 1:1 or Group class                              |
| 09:50 - 10:35 | Class             | 1:1 or Group class                              |
| 10:45 - 11:30 | Class             | 1:1 or Group class                              |
| 11:40 - 12:25 | Lunch / Class     | Lunch Time<br>11:30 - 12:30<br>12:30 - 13:20    |
| 12:35 - 13:20 | Class             | 1:1 or Group class                              |
| 13:30 - 14:15 | Class             | 1:1 or Group class                              |
| 14:25 - 15:10 | Class             | 1:1 or Group class                              |
| 15:20 - 16:05 | Class             | 1:1 or Group class                              |
| 16:15 - 17:00 | Class             | 1:1 or Group class                              |
| 17:00 - 17:45 | Class             | 1:1 or Group class                              |
| 17L30 - 19:00 | Dinner            | 1:1 or Group class                              |
| 19:00 - 22:00 | Self Study        |   |





- **Course Description**  
This course is designed to help learners improve their communication skills for everyday situation.
- **General Learning Outcomes**  
Students will be able to express themselves confidently in different situations.

## EEP1 (English Enhancement Program 1)

**3 Classes 1:1**

**0 Group Classes (6:1)**

- **Everyday English** (Survival English)  
(At the airport, hospital, supermarket etc.)
- **Speak-up**  
(picture description, common slangs)
- **Active Listening**

- **No Group Classes**

| CLUSTER | SUBJECT          | Descriptions  |
|---------|------------------|---|
| 1:1     | Everyday English | To familiarize students with various expressions used in specific situations.                     |
|         | Speak-up         | To help the students express their ideas and opinions in a free manner.                           |
|         | Active Listening | Intended to help students practice listening to different conversations used in daily activities. |

## EEP2 (English Enhancement Program 2)

**4 Classes 1:1**

**1 Group Classes (6:1)**

- **Conversations** (Role play activities)
- **Simple presentation** (Cooking, baking, how to make crafts etc.)
- **Active Listening**
- **Vocabulary Builder**

- **Interactive Discussion**

| CLUSTER | SUBJECT                | Descriptions   |
|---------|------------------------|--|
| 1:1     | Conversation           | It develops the students' ability to engage in a daily conversations.                              |
|         | Simple Presentation    | To build students' confidence in delivering simple presentations.                                  |
|         | Vocabulary Builder     | The students will enhance lexical resource use in specific situations.                             |
|         | Active Listening       | Intended to help students practice listening to different conversations used in daily activities.  |
| Group   | Interactive Discussion | To help the students have a wider perspective and share their ideas with different general topics. |



This program is designed for Language Learners who want to focus and excel in their English Studies for Academic purposes. In this program, assessment is provided to monitor students' progress.

| A0   |  | A1         |   | A2     |  | B1   |  | B2          |  | C1          |  | C2  |  |         |   |          |  |
|--|--|------------|---|--------|--|--|--|-------------|--|-------------|--|---|--|---------|---|----------|--|
| Beginner 1   |  | Beginner 2 |   | Elem 1 |  | Elem 2   |  | Pre-Inter 1 |  | Pre-Inter 2 |  | Inter 1   |  | Inter 2 |   | Advanced |  |
| ESL FUNDAMENTAL  |  |            |   |        |  | ESL DEVELOPMENTAL  |  |             |  |             |  | ESL INTENSIVE   |  |         |   |          |  |
| 8 Classes  |  |            |   |        |  | 8 Classes  |  |             |  |             |  | 8 Classes   |  |         |   |          |  |
| Group Class  |  |            | Listening<br>Vowels and Consonants<br>Discussion        |        |  | Group Class  |  |             | Listening<br>Stress and Intonation<br>Discussion               |             |  | Group Class   |  |         | Listening<br>Accent Training<br>Debate  |          |  |
| 1:1  |  |            | Speaking<br>Writing<br>Vocabulary<br>Reading<br>Grammar |        |  | 1:1  |  |             | Public Speaking<br>Writing<br>Speaking 1<br>Reading<br>Grammar |             |  | 1:1   |  |         | Speaking (Research)<br>Speaking (Presentation)<br>Writing Pro<br>Reading Mastery<br>Grammar Pro |          |  |
| <ul style="list-style-type: none"> <li>• Students with CEFR level A0 - A2</li> <li>• Lecture Approach</li> <li>• Guided Activities</li> <li>• Foundational for Basic Language</li> </ul> |  |            |   |        |  | <ul style="list-style-type: none"> <li>• Students with CEFR level B1 - B2</li> <li>• Discussion Approach</li> <li>• Interactive Activities</li> <li>• Enhancement of student's oral and written communication</li> </ul> |  |             |  |             |  | <ul style="list-style-type: none"> <li>• Students with CEFR level C1 - C2</li> <li>• Supervision Approach</li> <li>• Supervised presentations/ Activities</li> <li>• Application of Language skills through variety of engaging subjects</li> </ul> |  |         |   |          |  |

**ESL FUNDAMENTAL**

- Students with **CEFR** levels **A0-A2**.
- This course is intended for acquiring and building the Language skills.
- Three group classes: discussion, pronunciation, and listening for the acquisition of basic language skills in speaking and listening.
- Daily monitoring outcomes for pronunciation, grammar, vocabulary, and reading to build up the foundational skills for standard learning.
- Weekly vocabulary tests and simple writing prompts to aid students to formulate meaningful sentences.
- End-term examination to assess students' progress.

**5 Classes 1:1**

- Speaking
- Writing
- Vocabulary
- Reading
- Grammar

**3 Group ESL Classes (6:1)**

- Listening
- Vowels and Consonants
- Discussion

**Monitored Outcomes**

- **Daily Exercises**  
Grammar, Vocabulary, Pronunciation, Reading
- **Weekly Test (Every Friday)**  
Vocabulary Unit Test  
Writing Prompts
- **End Term Exam**





## ESL DEVELOPMENTAL

- Students with **CEFR** levels **B1-B2**.
- This course is intended to progress and enhance the acquired skills from the fundamental level.
- Three group classes: Extended opportunity for discussion, pronunciation, and listening on a variety of topics to develop language skills in engaging complex speaking and listening.
- Daily monitoring outcomes for pronunciation, grammar and reading to expand the language skills for standard learning.
- Weekly complex writing prompts to progress the students in formulating effective sentences, paragraph and essays.
- End-term examination to assess students' progress.

### 5 Classes 1:1

- Public Speaking
- Writing
- Speaking 1
- Reading
- Grammar

### 3 Group ESL Classes (6:1)

- Listening
- Stress and Intonation
- Discussion

### Monitored Outcomes

- **Daily Exercises**  
Grammar, Vocabulary, Pronunciation, Reading
- **Weekly Test (Every Friday)**  
Writing Prompts
- **End Term Exam**

## ESL INTENSIVE

- Students with **CEFR** levels **C1-C2**.
- This course focuses on the application of the acquired language skills through a variety of engaging subjects.
- More intensive exercises were implemented to equip the students' skills.
- Three group classes: debate, accent, and News listening to engage students in authentic activities.
- Class presentations, journal making, research and debates for the application of the skills acquired to elevate the language skills in advanced level.
- End-term examination to assess students' progress.

### 5 Classes 1:1

- Speaking  
(Research and Presentation)  
90mins
- Writing Pro
- Reading Mastery
- Grammar Pro

### 3 Group ESL Classes (6:1)

- Listening
- Accent Training
- Debate

### Monitored Outcomes

- **Daily Exercises**  
Grammar
- **Weekly Activity**  
Presentations  
Research Journal
- **End Term Exam**





This program is designed to prepare students to take the IELTS official test with the essential skills and knowledge they need to attain their target band score. It is recommended to study ESL fundamental for students who cannot attain the minimum assessment average band score of 3.0.

| CEFR        | <b>A2</b>   | <b>B1</b>  | <b>B2</b> | <b>C1</b>   | <b>C2</b> |
|-------------|---|--|-----------|---|-----------|
| IELTS       | <b>3.0 - 3.5</b>  | <b>4.0 - 5.5</b>   |           | <b>6.0 - 9.0</b>  |           |
| WALES       | <b>IELTS Starter</b>  | <b>IELTS Developing</b>  |           | <b>IELTS Intensive</b>  |           |
| Requirement | Students should have a minimum assessment score of <b>3.0</b> to be accepted to the IELTS program | Students should have an assessment score of <b>4.0 - 5.5</b> . |           | Students should have an assessment score <b>6.0 and above</b> . |           |

**IELTS STARTER (3.0-3.5)**

- Students with or without experience of the IELTS test who have 3.0 - 3.5 assessment band score.
- The curriculum focuses on the skills development and provides step-by-step exercises and guidance on the questions that appear in the IELTS test.
- Three Group ESL classes of discussion, pronunciation and listening to enhance the fundamental skills for ideal learning.
- Monitored self-study to build up vocabulary needed for IELTS.
- Mock IELTS conducted twice for each term to assess students.

**5 Classes 1:1**

- IELTS Listening
- IELTS Reading
- IELTS Speaking
- IELTS Writing
- IELTS Grammar

**3 Group ESL Classes (6:1)**

- Interactive Listening
- Accent Enhancement (Pronunciation)
- Group Discussion

**Monitored self-study**

Vocabulary Workbook

## IELTS DEVELOPING (4.0-5.5)

- The curriculum focuses on the exercises to give students the opportunity to practice the skills, process the information and acquire strategies to help students in the IELTS test.
- Group class of conceptualization to develop and expand ideas for writing task 2. Also, a group class for the reinforcement of the application of grammar rules for IELTS writing and IELTS speaking.
- Monitored self-study to build up vocabulary needed for IELTS and written corrective feedback to identify specific errors in the student's written output.
- Mock IELTS conducted twice for each term to assess students.

### 5 Classes 1:1

- IELTS Listening
- IELTS Reading
- IELTS Speaking
- IELTS Writing 1
- IELTS Writing 2

### 2 Group Classes (6:1)

- Grammar
- Conceptualization

### Monitored self-study

Vocabulary Workbook  
Writing Workbook

## IELTS INTENSIVE (6.0-9.0)

- The curriculum focuses on a more intensive practice to further enhance the student's skills.
- Group class of analysis to develop and expand ideas for writing task 2. Also, a group class for the reinforcement of the application of grammar rules for IELTS writing and IELTS speaking.
- Monitored self-study for writing and written corrective feedback is given to identify specific errors in the student's written output.
- Mock IELTS conducted twice for each term to assess students.

### 5 Classes 1:1

- IELTS Listening
- IELTS Reading
- IELTS Speaking
- IELTS Writing 1
- IELTS Writing 2

### 2 Group Classes (6:1)

- Grammar
- Analysis

### Monitored self-study

Writing Workbook

## MOCK TEST

2 times for each term (Middle and end of the term)

### **Middle of the term:**

Speaking mock test is on Friday

The mock test for listening, reading, writing is on Saturday

### **End term:**

The mock test for listening, reading, writing is on the last day of the term.



| A0  |  | A1         |  | A2     |  | B1  |  | B2          |  | C1          |  | C2  |  |         |  |          |  |
|---|--|------------|--|--------|--|---|--|-------------|--|-------------|--|---|--|---------|--|----------|--|
| Beginner 1  |  | Beginner 2 |  | Elem 1 |  | Elem 2  |  | Pre-Inter 1 |  | Pre-Inter 2 |  | Inter 1   |  | Inter 2 |  | Advanced |  |
| <b>Jr. ESL FUNDAMENTAL</b>  |  |            |  |        |  | <b>Jr. ESL DEVELOPMENTAL</b>  |  |             |  |             |  | <b>Jr. ESL INTENSIVE</b>  |  |         |  |          |  |
| 8 Classes   |  |            |  |        |  | 8 Classes   |  |             |  |             |  | 8 Classes   |  |         |  |          |  |
| Group Class   |  |            | Listening<br>Phonetics<br>Grammar                            |        |  | Group Class   |  |             | Listening<br>Phonetics<br>Grammar                            |             |  | Group Class   |  |         | Listening<br>Accent<br>Grammar                               |          |  |
| 1:1   |  |            | Speaking 1<br>Speaking 2<br>Writing<br>Vocabulary<br>Reading |        |  | 1:1   |  |             | Speaking 1<br>Speaking 2<br>Writing<br>Vocabulary<br>Reading |             |  | 1:1   |  |         | Speaking 1<br>Speaking 2<br>Writing<br>Vocabulary<br>Reading |          |  |
| <ul style="list-style-type: none"> <li>• Students with CEFR level A0 - A2</li> <li>• Lecture and modeled Approach</li> <li>• Guided and modeled Activites</li> <li>• Foundational for Basic Language</li> </ul> |  |            |  |        |  | <ul style="list-style-type: none"> <li>• Students with CEFR level B1 - B2</li> <li>• Discussion Approach</li> <li>• Interactive Activites</li> <li>• Enhancement of student's oral and written communication</li> </ul> |  |             |  |             |  | <ul style="list-style-type: none"> <li>• Students with CEFR level C1 - C2</li> <li>• Supervision Approach</li> <li>• Supervised Activities</li> </ul> |  |         |  |          |  |

**JUNIOR FUNDAMENTAL**

- **Course Description**  
The ESL Junior Fundamental is to provide students with the basic English skills needed for both school performance and everyday living.
- **General Learning Outcome**  
English Language Learners acquire academic language skills through the use of interactive instructional techniques.

| CLUSTER       | SUBJECT    | Descriptions  |
|---------------|------------|---|
| Group Classes | Listening  | To expose students to active listening skills.  |
|               | Phonetics  | To get students to focus on specific sounds: vowels and consonants  |
|               | Grammar    | To introduce students the parts of the speech, simple tenses at the introductory level  |
| 1:1           | Speaking 1 | To get students respond and practice the language with guided simple questions  |
|               | Speaking 2 | It provides students additional speaking practice with different interactive activities   |
|               | Writing    | To have students understand and write basic sentence structure and content in introductory level  |
|               | Reading    | To have students understand and read basic sentences in introductory level  |
|               | Vocabulary | To introduce students to basic English vocabulary including greetings, family members, numbers, places in home, daily activities and etc. |

## JUNIOR DEVELOPMENTAL

- **Course Description**

The ESL Junior developmental is to develop students with the English language skills needed for both school performance and everyday living.

- **General Learning Outcome**

English Language Learners develop language acquisition and cognitive academic language skills through the use of strategic instructional techniques.

| CLUSTER       | SUBJECT    | Descriptions  |
|---------------|------------|---|
| Group Classes | Listening  | To develop students active listening skills.  |
|               | Phonetics  | To get students to focus on sentence stress, intonation, blending and phrasing.   |
|               | Grammar    | To understand higher forms of grammar structures  |
| 1:1           | Speaking 1 | It provides students practice of language items (vocabulary, grammar functions)   |
|               | Speaking 2 | To develop students' conversational skills appropriate for mid- level grammar and vocabulary  |
|               | Writing    | Intends to develop students writing skills in applying the mechanics of writing correctly   |
|               | Reading    | Equips students with the necessary reading skills to enable them to comprehend academic texts   |
|               | Vocabulary | Aims to expand students' vocabulary appropriate to their level such as environmental conservation, technology, space exploration and etc. |

## JUNIOR INTENSIVE

- **Course Description**

The ESL Junior Intensive is to provide students with the higher English language skills needed for both school/ academic performance and everyday living.

- **General Learning Outcome**

Boost the learners' cognitive academic language competence that will enable the students to analyze and apply the acquired skills.

| CLUSTER       | SUBJECT    | Descriptions  |
|---------------|------------|---|
| Group Classes | Listening  | To help students practice advanced listening and note-taking skills.  |
|               | Accent     | To help the student develop more fluid speech needed for academic purposes  |
|               | Grammar    | To enhance students' knowledge in advanced grammar such as passive and active voice, gerunds, conditionals, clauses, and phrases. |
| 1:1           | Speaking 1 | Aids students to elevate their ability to understand and talk about complex issues.   |
|               | Speaking 2 | To enhance students' communication skills through mini research with presentation.  |
|               | Writing    | Enhance students' skills in writing compositions.   |
|               | Reading    | To help students understand ideas from information and facts that are not directly stated in a reading text.                      |
|               | Vocabulary | Equips students to build a more advanced academic vocabulary.   |



Provide a channel for reinforcing the lessons learned in the classroom, offering students the opportunity to apply academic skills in a real-world context.

| Activities                           | Descriptions   |
|--------------------------------------|--|
| Vocabulary (Monday)                  | Varied vocabulary exercises such as antonyms and synonyms, word mapping and sentence construction that support students to improve all areas of communication – listening, speaking, reading, and writing.                                     |
| Movie Viewing (Tuesday)              | Specific movie is prepared for the age level with post task activities that provides source of authentic and varied language. It gives examples of English used in 'real' situations outside the classroom, particularly interactive language. |
| Reading (Wednesday)                  | Reading materials are provided such as authentic reading that aids students to develop their critical thinking skills  |
| Presentations (Thursday)             | Making and practicing of presentations. This will improve performance and at the same time help students master the language to communicate confidently  |
| Writing & Physical Activity (Friday) | Writing Journals for learners to express their opinions and build sentences following the rules of the language.<br>Physical activities for students to increase enjoyment and to enhance their social skills.                                 |

### \* Rules

1. Students must attend the everyday night class and participate in the activities since nobody is exempted.
2. Students are allowed to be absent only twice except for valid reasons. If not, students will be dropped from the night class.
3. Students' activities are divided based on the Age and English Level.
4. Students will have their own folders and score sheet for their output performance.
5. Students with big improvement will receive an award (certificates) not only for the academic result but also participation and attitude.

## JUNIOR IELTS

This program is designed to prepare junior students to take the IELTS official test with the essential skills and knowledge they need in order to attain their target band score. It is recommended to study ESL fundamental for students who cannot attain the minimum assessment average band score of **4.0**.

| CEFR        | B1   | B2 | C1   | C2 |
|-------------|--|----|--|----|
| IELTS       | 4.0 - 5.5  |    | 6.0 - 9.0  |    |
| WALES       | IELTS Developing   |    | IELTS Intensive  |    |
| Requirement | Students should have an assessment score of <b>4.0 - 5.5</b> . |    | Students should have an assesment score <b>6.0 and above</b> . |    |

## IELTS DEVELOPING (4.0-5.5)

- The curriculum focuses on the exercises to give students the opportunity to practice the skills, process the information and acquire strategies to help students in the IELTS test.
- Group class of conceptualization to develop and expand ideas for writing task 2. Also, a group class for the reinforcement of the application of grammar rules for IELTS writing and IELTS speaking.
- Monitored self-study to build up vocabulary needed for IELTS and written corrective feedback to identify specific errors in the student's written output.
- Mock IELTS conducted twice for each term to assess students.

### 5 Classes 1:1

- IELTS Listening
- IELTS Reading
- IELTS Speaking
- IELTS Writing 1
- IELTS Writing 2

### 2 Group Classes (6:1)

- Grammar
- Conceptualization

### Monitored self-study

Vocabulary Workbook  
Writing Workbook

## IELTS INTENSIVE (6.0-9.0)

- The curriculum focuses on a more intensive practice to further enhance the student's skills.
- Group class of analysis to develop and expand ideas for writing task 2. Also, a group class for the reinforcement of the application of grammar rules for IELTS writing and IELTS speaking.
- Monitored self-study for writing and written corrective feedback is given to identify specific errors in the student's written output.
- Mock IELTS conducted twice for each term to assess students.

### 5 Classes 1:1

- IELTS Listening
- IELTS Reading
- IELTS Speaking
- IELTS Writing 1
- IELTS Writing 2

### 2 Group Classes (6:1)

- Grammar
- Analysis

### Monitored self-study

Writing Workbook

## MOCK TEST

2 times for each term (Middle and end of the term)

### **Middle of the term:**

Speaking mock test is on Friday

The mock test for listening, reading, writing is on Saturday

### **End term:**

The mock test for listening, reading, writing is on the last day of the term.



# FACILITY





# CLASSROOM



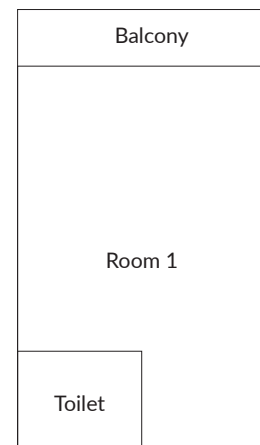


# DORMITORY \_ STUDIO TYPE



- **Share Type :**  
Single or Twin Share

- **Amenities :**  
Refrigerator, Electric Kettle, Microwave oven  
Hair Dryer, Bidet  
WIFI provide : 60Mbps





# DORMITORY \_ PREMIUM STUDIO TYPE

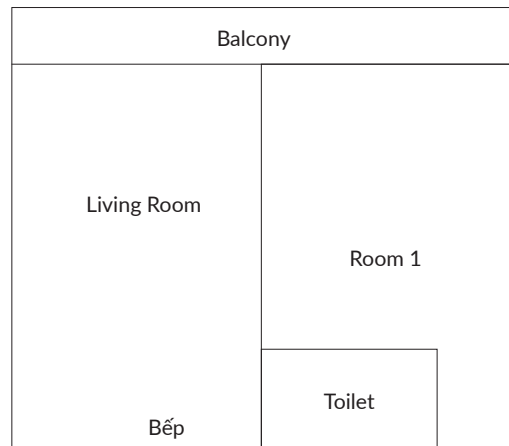


● **Share Type :**

Single or Twin, Triple Share

● **Amenities :**

Refrigerator, Electric Kettle, Microwave oven, Induction Cooker, LED TV with Netflix  
Hair Dryer, Bidet  
WIFI provide : 60Mbps





# DORMITORY \_ SHARE TYPE



- **Share Type :**  
Single or Twin Share

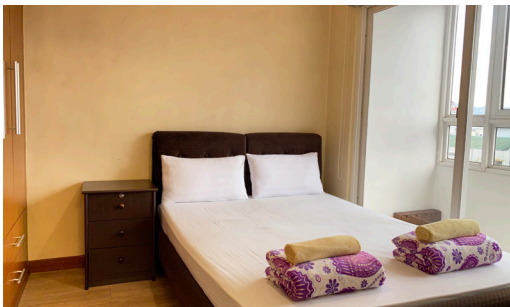
- **Amenities :**  
Refrigerator, Electric Kettle, Microwave oven, Gas Stove,  
LED TV with Netflix  
Hair Dryer, Bidet

WIFI provide : 300Mbps





# DORMITORY \_ CONDO TYPE



● **Share Type :**

Semi Single, Family (Max 4pax)

● **Amenities :**

Refrigerator, Electric Kettle, Microwave oven, Gas range,  
LED TV with Netflix  
Hair Dryer, Bidet

WIFI provide : 300Mbps

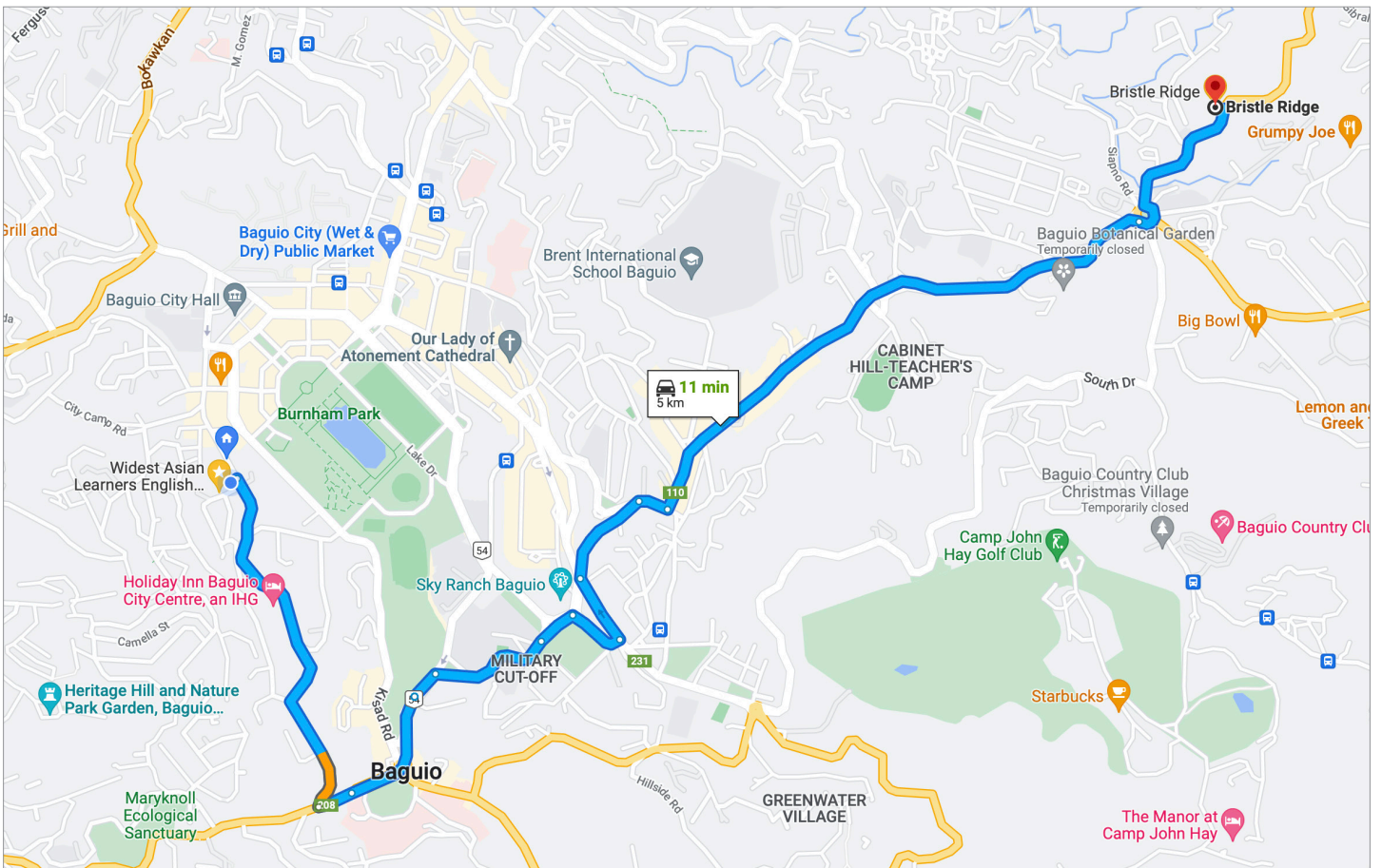




# DORMITORY \_ PREMIUM CONDO TYPE







● **Share Type :**

Semi Single or Family (4Pax)

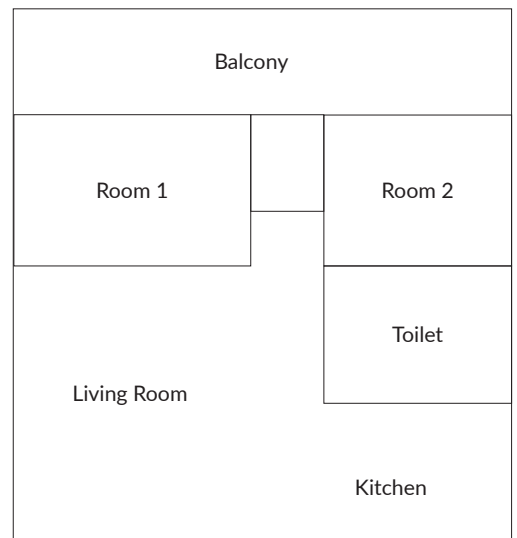
● **Amenities :**

Refrigerator, Electric Kettle, Microwave oven, Induction Stove,  
LED TV with Netflix

Hair Dryer, Bidet

Centralized Boiler

WIFI provide : 300Mbps





# TESTIMONIALS



## 🇹🇼 "Make more mistakes" / Anna

Comparing with others, WALES IELTS lessons not only focus on test subject also offer grammar and group discussion class and I am surprising with that.

All your teachers were asking my goal and they were providing sort of methods to prepare the IELTS as well as learn English. From practicing, I built more confidence because I learn a lot and teachers always encourage me don't afraid to make the mistakes and you can from the mistakes to learn more.

Therefore, I am looking forward to going school to study every day. I believe that I can progress as soon as possible.

## ★ "One of the happiest moment ever!!" / Vanessa

Since I studied ESL (English communication) at Wales, my English skills have been improved a lot, from a person couldn't speak English, couldn't understand English and also I was shy when I met foreigner, now I can communicate with friends from other countries who study in the same school with me by using English everyday.

Although my English skills are not excellent (because my name is not in the top ten student list haha), I am really happy with what I have learned in Wales.



## 🇵🇭 "comfy" / Pablo

The schedule was very appealing for me: Six hours of private class and two hours in a group, daily for one month. It was demanding -this is Asia, guys, don't forget it!

My goal was improving my English before travelling around Asia, but I got something better: I started to traveling every day, in every class, talking to my teachers and my classmates I was meeting new cultures, new food, new advices, new visions of life from the Philippines, Japan, Korea, Vietnam, Taiwan, China, Arabia, and so on.



## 🇯🇵 "WALES style fits me" / Chiaki

In a program, subjects can be changed so I maximized the number of Speaking classes. I got surprised and appreciated that school reacted to change my schedule within the day I requested.

As for meal, 3 meals throughout Monday to Friday and 2 meals on weekend. You can eat as much as you want.

Near the school, there is a park that you can take a walk. Café, restaurant, convenience store...etc are also near that you can reach with a few minutes walk.





## **[IELTS]From 4.0 to 6.5 within 4 months!!!! / NIKITA**

The reason why I study English, specifically IELTS is I will study in Canada. I really appreciate all of my teachers and school staffs, they help me out a lot. After studied here, I realized that I'm more mature than before, I can make my own decision. In WALES, teachers are very enthusiastic and friendly, not only as my teachers but also as my friends. Beside that, our Vietnamese manager encourages me to study everyday.



Improved 2.5!!!!

After studied for 4 months, from IELTS 4.0, I can improve my score to 6.5, especially my speaking has significantly improved. In the first month, my English didn't improve much. However, in the 4th month it's significantly improved.

- **Entrance test :** Band score 4.0 (Listening : 3.5 / Reading : 5.0 / Writing : 2.0 / Speaking : 4.5 )
- **After 4 months :** Band score 5.5 ( Listening : 6.5 / Reading : 4.5 / Writing : 5.5 / Speaking : 6.0 )
- **Official test :** Band score 6.5 ( Listening : 7.0 / Reading : 5.5 / Writing : 6.0 / Speaking : 7.0 )

No need to force yourself to study...?!

WALES is not Sparta system, we are allowed to go out after class, but also thanks to that, I can study more relax and study more comfortable

My room was very clean, Wi-Fi connection also stable, food are not as good as Vietnamese food but it's okay, chefs cook variety of food for every meals. The only problem was that my skin got more dry because of the weather.

My agent recommended me to study in WALES, overall I'm very satisfied with her recommendation. If you want to study in this homey ambience and effectively, you should come to WALES to study. If I have chance to go Baguio, definitely I'll come visit WALES.

---

## **[IELTS]Improved writing skill 1.5~6.5 within 2 months / TRANG**



I came here to study with my best friend though the recommendation from my agent. We were studying in Russia but we want to change the environment, so after studied English here, we'll go study at university in Canada.

Study English in Philippines, especially WALES made me become more mature, think more about my action. I made a lot of friends here, from different nationalities, so it's very good chance for me to practice speaking English outside class, but we don't keep in touch much after we graduated since we are busy with our own things. However, teachers and staffs in WALES are friendly and enthusiastic, they helped me a lot.

During entrance exam, my writing score was only 1.5, I got really sad, I couldn't believe that I got such a low score, but I took mock test again after 2 months and my score has improved to 6.5.

Therefore, in my opinions, it's better to choose school like WALES, not so strict, not so stressful, you have more time to relax and explore the Philippines while studying here. I'm very satisfied with everything in school, I've enjoyed a lot.

If you want to improve your IELTS score in short time and also want to study in not so pressure atmosphere then you should come to WALES to study. I bet you won't regret your decision.



# AROUND SCHOOL



## SM mall and Bunharm Park

Baguio SM is a shopping mall located in the city of Baguio in the Philippines. It is part of the SM Supermalls chain, which is the largest shopping mall operator in the Philippines. Baguio SM offers a wide range of retail shops, restaurants, and entertainment options, as well as a supermarket, department store, and cinema.

Bunharm Park, on the other hand, is not a well-known destination in Baguio. As an AI language model, I don't have any information on a place called "Bunharm Park." It is possible that you may have spelled the name incorrectly or it is a lesser-known attraction in the city.

## Fast Food Franchise

WALES Academy, located in a bustling neighborhood, offers students easy access to various food options. Within just a 5-minute walking distance from the academy, there are numerous popular franchise restaurants such as Jollibee, McDonald's, Chowking, Inasal, and more.

These fast-food restaurants are convenient options for students who want to grab a quick bite to eat between classes or during breaks. They offer a variety of meal options at affordable prices, making it easy for students to satisfy their hunger without breaking the bank. Having a variety of food options close to the academy is an advantage for students, giving them the freedom to choose their preferred meal while also saving them time and money.



## Grocery

Within walking distance from the academy, there are several grocery stores, including Seven Eleven, Korean Grocery, Asian Mart, and Japanese Import Products. One of the largest grocery stores in the area is Pure Gold, offering a wide selection of products.

Having several grocery options near the academy is a convenient advantage for students who may not have access to transportation or prefer to shop on foot. These stores offer affordable prices, and students can take advantage of the various products and items available. Overall, students can take advantage of the convenient location of these grocery stores and shops, allowing them to purchase what they need to make their time at the academy more comfortable and enjoyable.

## Altitude Gym

Altitude Gym is a fitness facility that offers a variety of classes, including kickboxing. Led by experienced instructors, these classes provide a challenging and fun full-body workout that can improve physical fitness and mental wellbeing. Participants of all skill levels are welcome, and the gym provides a safe and supportive environment to help achieve their fitness goals.





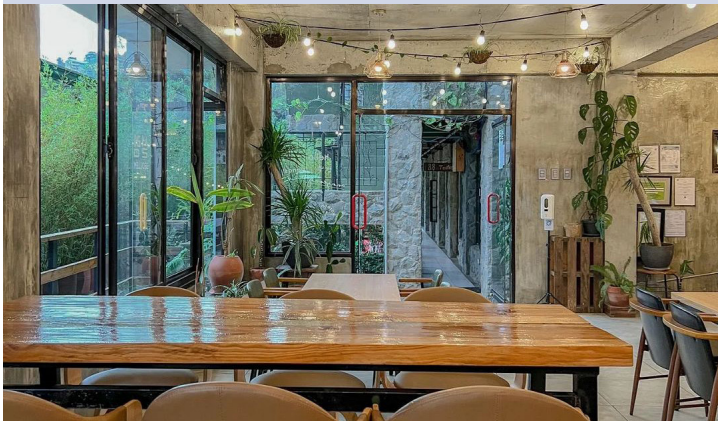


### Cafe by the ruins

Cafe by the Ruins was rebuilt into a romantic, modern cafe, reclaiming its title as one of the best coffee shops in Baguio. A visit to this iconic cafe is not complete without trying their signature Ruins Coffee infused with cinnamon and cardamom that's sure to uplift your mood. Plus, you can take home-baked pastries like Luisa's Ensaymada and Ernie's Camote Bread that are sure to be a hit with the family!

### Starbucks, Heritage Mansion

Starbucks coffee shop in Heritage Mansion is a popular destination for tourists and locals in Baguio City. It is located near WALES academy and is only a 5-minute walk away. Heritage Mansion is a historic building that has been transformed into a commercial complex, and Starbucks is one of the most well-known establishments located inside. Visitors can enjoy a variety of coffee and tea drinks, as well as a selection of snacks and pastries.



### Foam Coffee

If you're visiting WALES and looking for a nearby coffee shop, you're in luck! Foam Coffee is just a short 5-minute walk away from WALES Academy.

This means that you can easily take a quick break from your studies or activities and enjoy a delicious cup of coffee or a non-caffeinated beverage at Foam Coffee. We recommend trying their signature latte with its frothy foam or enjoying one of their premium donuts from Glazed Artisan Donuts.

### Canto

Their best seller is the Lomo Ribs, a grilled pork ribs marinated with homemade barbecue sauce. They usually partner this dish with a salad and mashed potato.

As expected, Canto's best-selling grilled lomo ribs never disappoint. It's juicy, tender, and that barbecue sauce adds a flavorful explosion inside my mouth. The mash potato is also creamy! Baguio is also known for its freshest vegetables so you'll also taste the freshest salad here in Canto. All I can say, that 15-20 minutes queuing time is worth the wait!



### Session Road

Session Road is a popular destination in Baguio City, Philippines. On Sundays, it's bustling with activity, including chalk art, buskers, cosplayers, and stalls selling a range of products. It's a great place to take a leisurely walk and explore the city's vibrant atmosphere, sample local cuisine, and interact with friendly locals. As one of UNESCO's creative cities, Baguio City is known for its rich cultural heritage, natural beauty, and creative energy, making it a must-visit destination for anyone looking to experience the best of the Philippines.



# ACTIVITIES



ASIN Hot Spring



Kultra splash Island



Mt. Kalugong



Ambuklao Dam



Vigan



Vigan



Sanjuan





SanJuan



Hundred Island



SanJuan



Thunderbird Resort



# WALEs

*With our focus on Wisdom, Ability, Leadership, Excellence, and Spirit,  
WALEs Academy is dedicated to helping you achieve your full potential.*